

SPRAYIT

Model No. SP-31000

Low Volume Low Pressure (LVLP) Siphon Feed Spray Gun



TABLE OF CONTENTS:

1. Description
2. Specification and Technical Data
3. Important Safety Instruction
4. Instructions for Operation
5. Maintenance/Storing
6. Troubleshooting/Repairs
7. Parts List
8. Warranty Information

1. Description

The SPRAYIT SP-31000 LVLP Siphon Feed Spray Gun can be used for variety of different applications such as Automotive, Industrial, Marine and Wood Working. The LVLP features require less air allowing you to use a smaller air compressor. Using the SPRAYIT SP-31000 reduces overspray and allows you to spray larger surfaces without having to stop. The Low Volume Low Pressure feature allow for more control with less overspray and waste. The Stainless Steel Fluid Needle and Nozzle are corrosion resistant. The separate and adjustable fluid fan pattern and air controls make for more precise fan patterns and less waste. Air consumption 3.0 to 3.9 CFM @ 30 PSI. Working pressure 28-45 PSI. Maximum pressure 60 PSI. The SPRAYIT brand has been manufacturing quality tools since 1928.

2. Specifications and Technical Data

1. Name of Parts

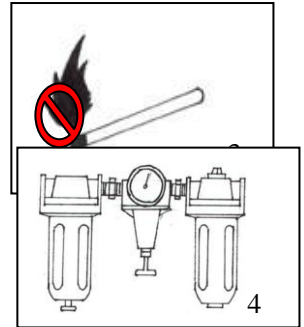
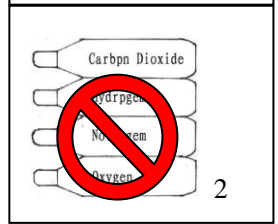
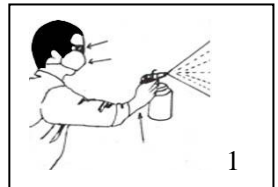
2. Technical Data

Type of Feed	Suction
Air inlet	1/4"
Standard Dia of Nozzle:	1.5mm
Optional Dia of Nozzle:	1.3-2.5mm
Recommended air pressure:	2.0-3.5bar (28.8 – 51psi)
Max. Pressure of air:	8.3 bar (120.5psi)
Paint Capacity:	1000cc
Avg. Air Consumption:	84.2 – 110.4 l/min (3.0-3.9cfm)
Pattern width	180-250mm
Weight	0.93kgs (2.50 lbs)



3. Important Safety Instructions

1. Toxic vapors produced by spraying certain materials can create intoxication and serious damage to your health. Always wear safety glasses, gloves and respirator to prevent toxic vapor hazard and solvent coming into contact with your nose, eyes or skin. (See fig 1)
2. Never use oxygen, combustible or any other bottle gas as a power source. This would cause explosion and serious personal injury. (See fig 2)
3. Fluid and solvent can be highly flammable or combustible. Use in well-ventilated spray booth and avoid any ignition sources, such as smoking, open flames and decrial hazard. (See fig 3)
4. Disconnect tool from air supply hose before doing tool maintenance and during non-operation.
5. Use clean, dry and regulate compressed air rated at 2.0~3.5bar, never exceed maximum permissive operating pressure (see fig 4)
6. Never use homogenate hydrocarbon solvent, which can chemically react with aluminum and zinc parts and chemically compatible with aluminum and zinc pats.
7. Never point gun at you and others at any time.
8. Before operating the tool, make sure all the screws & caps are securely tightened in case of leaking;
9. Before painting, inspect for free movement of the trigger and nozzle to insure tool can operate well.
10. Never modify this tool for any applications. Only use parts, nozzles and accessories recommended and accessories recommended by manufacture. This will void warranty.
11. This equipment should only be used in a well ventilated area.



4. Instructions For Operation

Preparation

1. After unpacking the product, inspect carefully for any damage that may have occurred during transit. Make sure to tighten fittings, bolts, etc., before putting unit into service.
2. Thoroughly mix and thin paint in accordance with the paint manufacturer's instructions. Most materials will spray readily if thinned properly.
3. Strain material through filter, cheese cloth or a paint strainer.
4. Fill the canister about ¾ full and start the air compressor.

WARNING DO NOT EXCEED Spray Gun or any other parts in the compressor system MAXIMUM PRESSURE.

5. After Connect the gun to air supply, please make sure that the fluid cap, container and air hose have been connected tightly with spray gun.
6. Set up a piece of cardboard or other scrap material to use as a target and adjust for best spray pattern.

WARNING Never aim or spray at yourself or anybody else which would cause serious injury.

7. Test the consistency of the material by making a few strokes on a cardboard target. If material still appears too thick, add a small amount of thinner. THIN WITH CARE! Do not exceed paint manufacturer's thinning recommendations.



Adjustment

The desired pattern, volume of fluid output and fine atomization can easily be obtained by regulating the Pattern Adjusting Knob, Fluid Adjusting Knob and Air Adjusting Knob.

PATTERN ADJUSTMENT: Turning Pattern Adjusting Knob to the right until tight will make spray pattern round, or turning left make spray pattern ellipse.

Material (PAINT) ADJUSTMENT: Turn the Paint Adjusting Knob clockwise will decrease the volume of fluid output and counter-clockwise will increase fluid output.

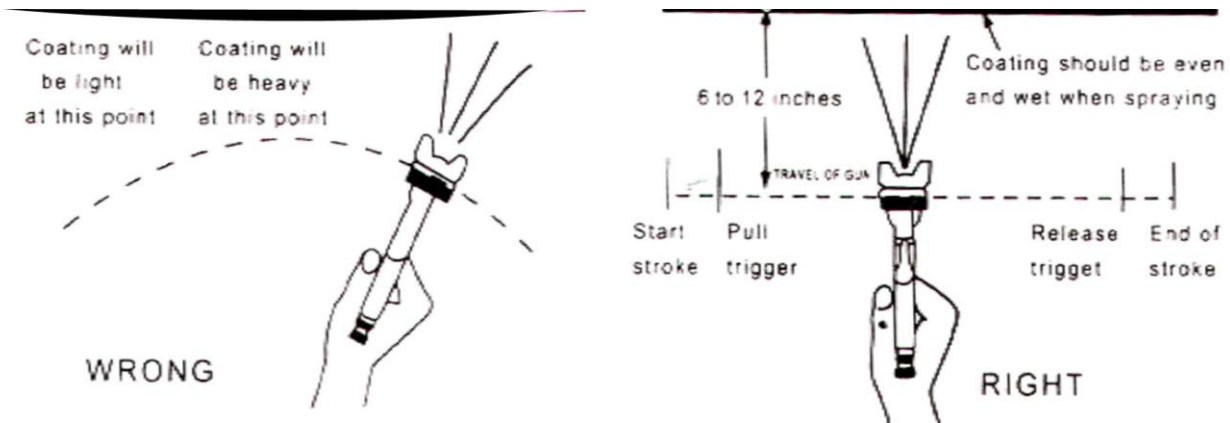
AIR Inlet ADJUSTMENT: Turning the Air Adjusting valve clockwise will decrease the air volume. And counter-clockwise will increase the air volume.

Operation

1. Begin spraying. Always keep the gun at right angles to the work.
2. Keep the nozzle about 6 to 12 inches from the work surface. Grip the gun keeping perpendicular with spraying area then move it parallel for several times, stopping gun movement in mid-stroke will cause a build up of paint and result in runs. Do not fan the gun from side to side while painting. This will cause a build-up of paint in the center of the stroke and an insufficient coating at each end.
3. Trigger the gun properly. Start the gun moving at the beginning of the stroke **BEFORE SQUEEZING THE TRIGGER** and release the trigger **BEFORE STOPPING GUN MOVEMENT** at the end of the stroke. This procedure will blend each stroke with the next without showing overlap or unevenness.
4. The amount of paint being applied can be varied by the speed of the stroke, distance from the surface and adjustment of the fluid control knob.
5. Overlap strokes just enough to obtain an even coat.

NOTE: Two thin coats of paint will yield better results and have less chance of runs than one heavy layer.

6. Use a piece of cardboard as a shield to catch overspray at the edges of the work to protect other surfaces.



5. Maintenance

Incomplete cleaning could cause function failures and a degradation of the fan form.

1. Remove any remaining paint by pouring it into another container.
2. Disassemble the spray gun making sure to remove the needle before disassembling the nozzle to avoid damage to the housing of the nozzle closure.
3. Clean all the paint passages and the nozzle. Clean the other components using a brush soaked in solvent.
4. Reassemble the spray gun and spray a small quantity of solvent to eliminate all the residues in the paint passages.

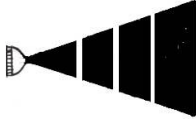
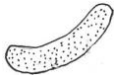
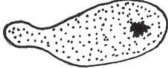
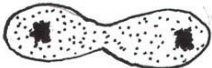

WARNING:

NEVER USE METAL OR OTHER OBJECTS THAT COULD DAMAGE THE HOLES IN THE NOZZLE AND CAP. NEVER IMMERSE THE SPRAY GUN COMPLETELY IN SOLVENT. NEVER USE COMPONENTS OR PARTS THAT ARE NOT MANUFACTURER ORIGINALS.

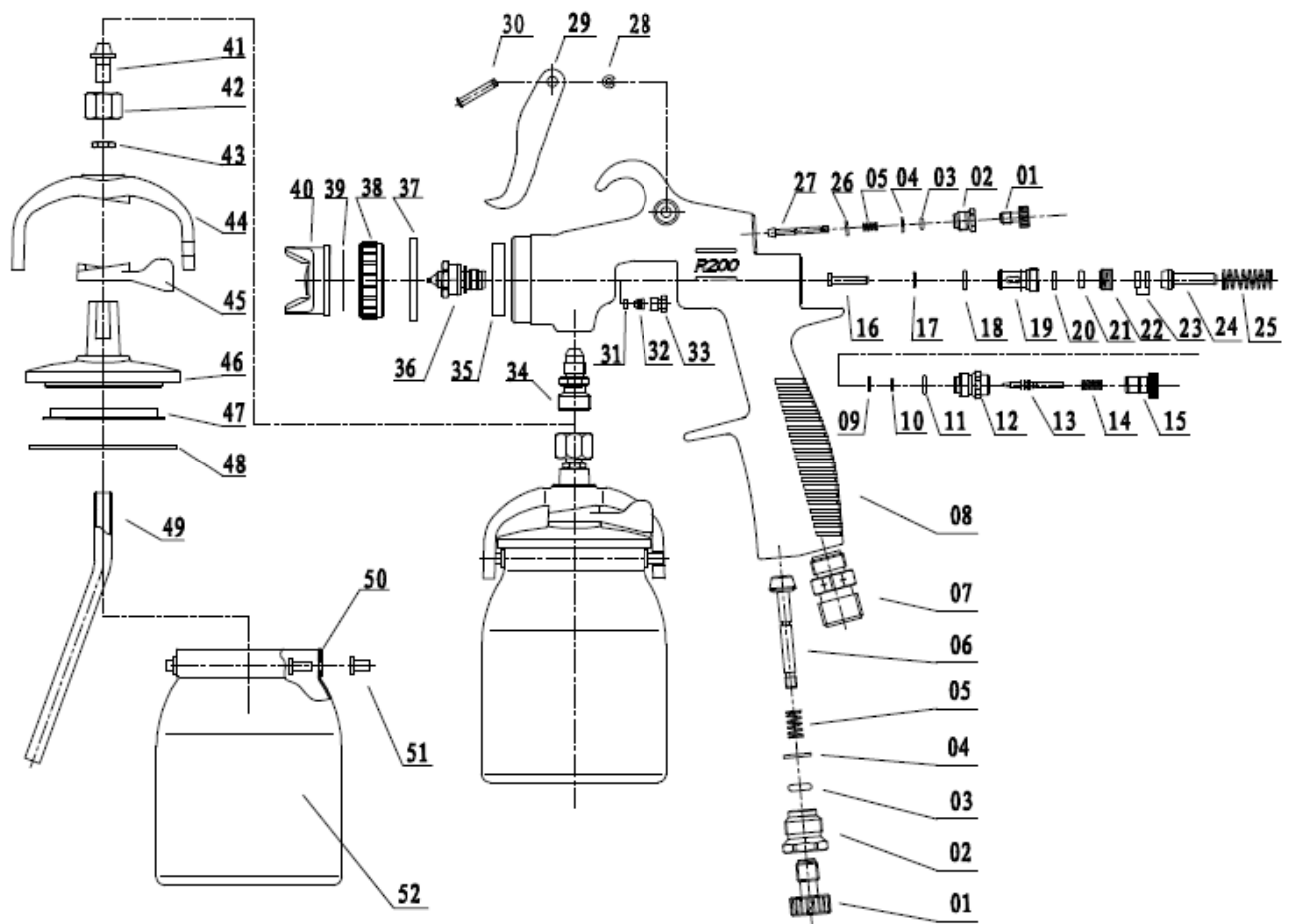
Storing

- When not using spray gun, turn the fluid adjustment knob counter-clockwise to open which will reduce spring tension on needle fluid tip.
- Spray gun **MUST BE** well cleaned and lightly lubricated.

6. Trouble Shooting

Symptom	Problems	Solution
Fluttering or spitting 	<ol style="list-style-type: none"> 1. Material level too low. 2. Container tipped too far. 3. Loose fluid inlet connection. 4. Loose or damaged fluid tip/seat. 5. Dry or loose fluid needle packing nut. 6. Air vent clogged 	<ol style="list-style-type: none"> 1. Add material into container. 2. Hold more upright. 3. Tighten. 4. Adjust or replace. 5. Lubricate and or tighten. 6. Clear vent hole.
Pattern is arc. 	<ol style="list-style-type: none"> 1. Worn or loose Fluid nozzle. 2. Material builds up on Air cap. 	<ol style="list-style-type: none"> 1. Tighten or replace Fluid nozzle. 2. Remove obstructions from holes, But don't use metal objects to clean it.
Pattern is not Evenly spread. 	<ol style="list-style-type: none"> 1. Material builds up on Air cap. 2. Fluid nozzle dirty or worn. 	<ol style="list-style-type: none"> 1. Clean or replace Air cap. 2. Clean or replace Fluid nozzle.
The center of Pattern too narrow. 	<ol style="list-style-type: none"> 1. Material too thin or not enough. 2. Atomization air pressure too high. 	<ol style="list-style-type: none"> 1. Regulate material viscosity. 2. Reduce air pressure.
Pattern width of fan-sharp is not enough. 	<ol style="list-style-type: none"> 1. Material too thick. 2. Atomization air pressure too low. 	<ol style="list-style-type: none"> 1. Regulate material viscosity. 2. Increase air pressure.
Air leaking from air cap without pulling trigger	<ol style="list-style-type: none"> 1. Sticking air valve stem 2. Contaminate on air valve or seat 3. Worn or damaged air valve or seat 4. Broken air valve spring 5. Bent valve stem 	<ol style="list-style-type: none"> 1. Lubricate 2. Clean 3. Replace 4. Replace 5. Replace
Fluid leaking from packing nut	<ol style="list-style-type: none"> 1. Packing nut loose 2. Packing worn or dry 	<ol style="list-style-type: none"> 1. Tighten, but do not restrict needle 2. Replace or lubricate (non-silicone oil)
Excessive overspray	<ol style="list-style-type: none"> 1. Too high atomization pressure 2. Too far from work surface 3. Improper stroking (arcing, gun motion too fast) 	<ol style="list-style-type: none"> 1. Reduce pressure 2. Adjust to proper distance 3. Move at moderate pace, parallel to surface.
Will not spray	<ol style="list-style-type: none"> 1. No pressure at gun 2. Fluid control not open enough 3. Fluid too heavy 	<ol style="list-style-type: none"> 1. Check air lines 2. Open fluid control 3. Thin fluid or change to pressure feed system.

7. Parts List



No	Description	No	Description	No	Description
1	Air Adj. Screw	19	Needle Housing	37	Washer
2	Air Adj. Knob	20	Washer	38	Nut
3	O-ring(3.15*1.8)	21	O-ring(4.5*1.2)	39	Air Cap Washer
4	Washer	22	Washer	40	Atomization
5	Air Valve Spring	23	Washer	41	Paint Inlet Nozzle
6	Snap Retainer	24	Spring core	42	Nut
7	Air Inlet Valve pole	25	Switch spring	43	Nut
8	Air Inlet Joint	26	Snap Retainer	44	Hanger
9	washer	27	Fluid Adj. Needle	45	Handle
10	O-ring(4.5*1.8)	28	Snap Retainer	46	Cup Lid
11	O-ring(9*1.8)	29	trigger	47	Washer
12	Fluid Adj. screw	30	Trigger lever	48	Washer
13	Fluid Adj. Needle	31	Washer	49	Paint Tube
14	Fluid Needle Spring	32	Sealing Washer	50	Pin
15	Fluid Adj. Knob	33	Direction Screw	51	Bolt
16	Switch pole	34	Paint Inlet Joint	52	Cup
17	O-ring (8.5*1.2)	35	Gasket		
18	O-ring (9*1.8)	36	Nozzle		

Note: If you need parts of this model, contact us or the distributor where you bought this product.

8. Warranty

WARRANTY POLICY

The limited warranty period begins on the date of retail purchase by the original purchaser

Limited Warranty

California Air Tools Inc. Will repair or replace, free of charge, to the original retail customer who purchased SPRAIT from an authorized dealer distributor or distributor's dealer. This warranty does not transfer to subsequent owners.

California Air Tools Inc. will repair or replace, at its option, any parts that are proven by an authorized service center to be defective in material or workmanship under normal use during the applicable warranty time period as stated below. This limited warranty covers the cost of the replacement parts and labor for all defects when installed by authorized service center. Transportation charges are the responsibility of the customer. Any part replaced under warranty becomes the property of California Air Tools Inc.

All parts replaced under warranty will be considered as part of original product, and any warranty on those parts will expire coincident with the original product warranty.

Limited Warranty Period

Non-commercial / Non-rental (personal use by a retail customer): 1 year parts

Disclaimers and Limitations of Remedies

This warranty gives you specific legal rights, and you may also have other rights which may vary from State to State.

Disclaimer of other Warranties

To the fullest extent permitted by applicable law, this limited warranty is exclusive and expressly in lieu of any and all other warranties, including, without limitation, any implied warranties of merchantability or fitness for a particular purpose or any other implied warranties that may arise from the course of dealing or usage of the trade. California Air Tools Inc. hereby disclaims and excludes all other warranties.

To the extent that California Air Tools Inc. products are consumer products under applicable federal and state law with respect to any customer, the duration of any implied warranties (including, but not limited to implied warranties of merchantability or fitness for a particular purpose) are limited to the shortest duration permitted by applicable law or the Limited Warranty period provided herein, whichever is longer.

Limitations of Remedies

California Air Tools Inc. shall not be liable to customer, or anyone claiming under customer, for any other obligations or liabilities, including, but not limited to, obligations or liabilities arising out of breach of contract or warranty, negligence or other tort or any theory of strict liability, with respect to the spray gun or California Air Tools Inc. acts or omissions or otherwise. To the fullest extent permitted by applicable law California Air Tools Inc. shall not in any event be liable for incidental, compensatory, punitive, consequential, indirect, special or other damages, including but not limited to loss of use, loss of income, loss of time, loss of sales, injury to personal property, or liability customer incurs with respect to any other person, or any other type or form of consequential damage or economic loss.