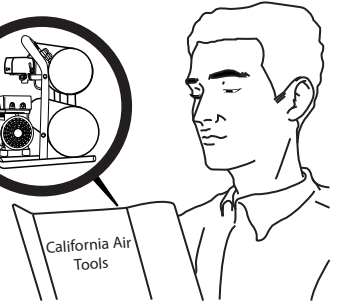
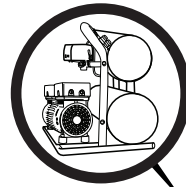
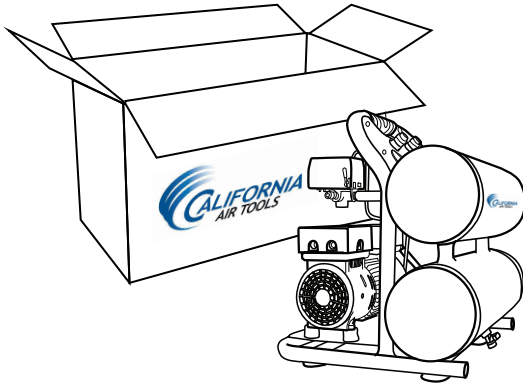


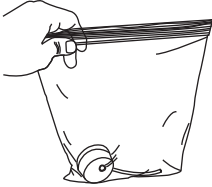
QUICK START GUIDE

1

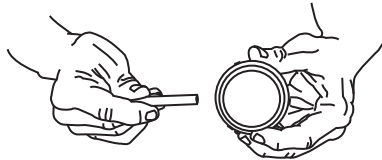


Please Read Manual

2

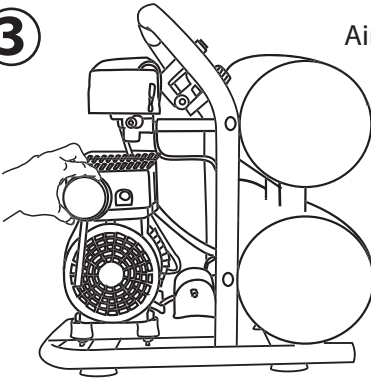


Air Filter Tube Installation

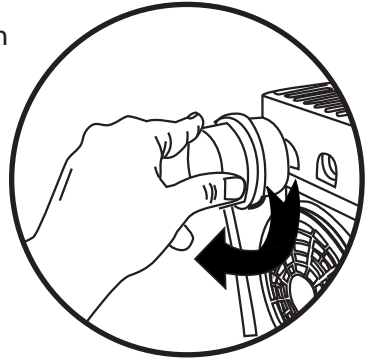


3

Air Filter Installation



Hand tighten only



4

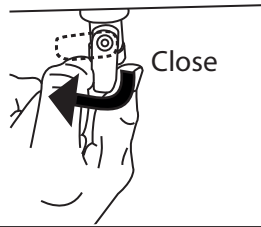
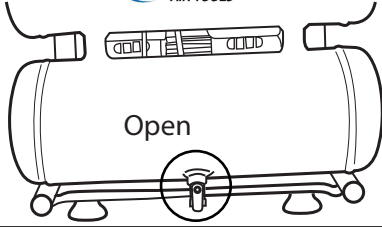
1/4" Industrial/ Universal Quick Connect

Push to Connect

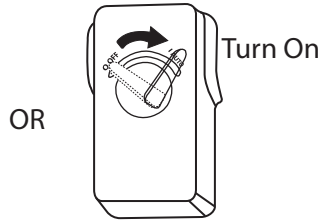
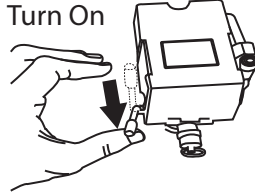
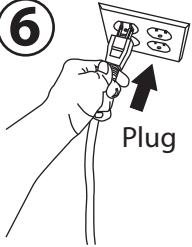


Drain Valve Operation

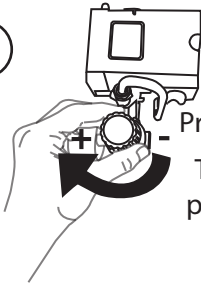
5



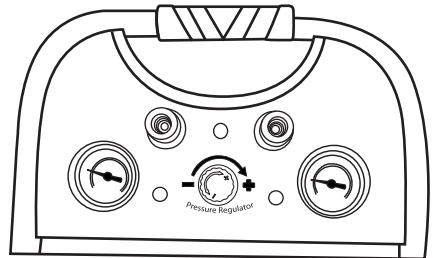
6



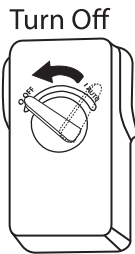
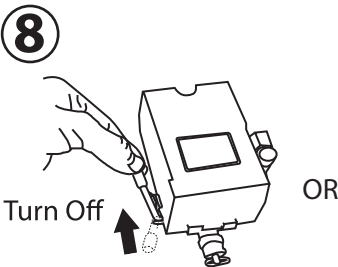
7



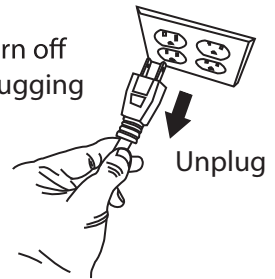
Pressure Regulator
Turn knob clockwise to rise pressure & counterclockwise to decrease.



8



*Note: Always turn off unit before unplugging



9

